

Specification



| Model | MVHS-8A | MVHS-10A | MVHS-15A | MVHS-20A |
|--------------------------|------------------------|----------|----------|----------|
| Bore No. | 8A | 10A | 15A | 20A |
| Port size | R1/4 | R3/8 | R1/2 | R3/4 |
| Medium | Air | | | |
| Operating pressure range | 0~1 MPa | | | |
| Ambient temperature | -5~+60°C (No freezing) | | | |
| Weight | 40 g | 54 g | 132 g | 148 g |

Order example

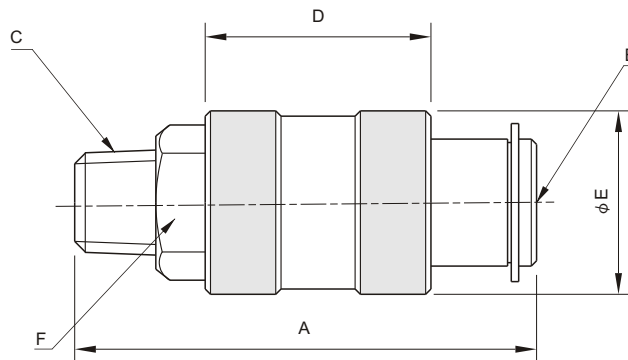
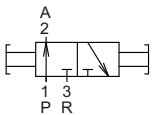
MVHS — 8A — G

MODEL

8A: R1/4
10A: R3/8
15A: R1/2
20A: R3/4

PORT THREAD
Blank: R thread
G: G thread
NPT: NPT thread

MVHS-*A



| Dim. / Modie | A | B | C | D | E | F |
|--------------|----|-------|------|----|------|-----|
| MVHS-8A | 58 | Rc1/4 | R1/4 | 32 | 25.5 | ∅19 |
| MVHS-10A | 57 | Rc3/8 | R3/8 | 32 | 31.5 | ∅22 |
| MVHS-15A | 91 | Rc1/2 | R1/2 | 49 | 38.5 | ∅27 |
| MVHS-20A | 91 | Rc3/4 | R3/4 | 49 | 42 | ∅35 |