

F ※ With S type floating joints.

Fig.1

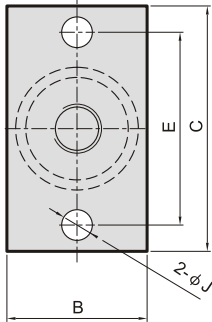
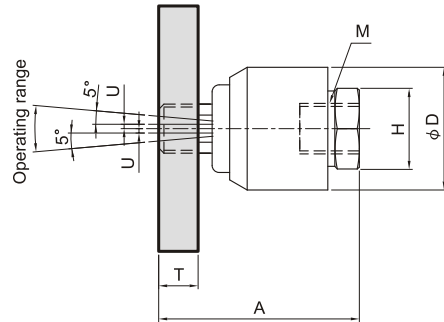
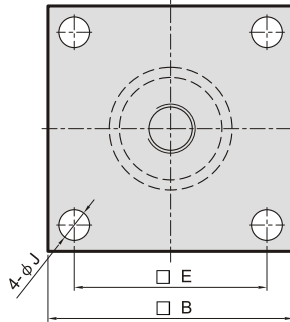


Fig.2



Model	A	B	C	φD	E	H	J	T	M	Illustration fig no.	Permissible U deviation	Rot. angle	Permissible pressure	Weight (g)
MFC-1008F	36	25	52	24	40	13	7	6	M8×1.25/1.0	Fig.1	0.5	±5°	3.5MPa (max.) Pneumatic / Hydraulic	130
MFC-1010F	46	32	56	26	44	17	7	9	M10×1.25		0.75			235
MFC-1012F	45	32	56	28	44	17	7	9	M12×1.25/1.5		1			240
MFC-1014F	58	38	80	35	60	22	11	12	M14×1.5		1.25			510
MFC-1016F	77	74	-	45	45	27	11	15	M16×1.5	Fig.2	2			1120
MFC-1018F	77	74	-	45	45	27	11	15	M18×1.5		2.5			1120
MFC-1020F	89	100	-	50	62	32	14	21	M20×1.5		3			2280
MFC-1022F	89	100	-	50	62	32	14	21	M22×1.5		4			2280
MFC-1024F	107	100	-	60	70	41	14	21	M24×1.5					2870
MFC-1026F	107	100	-	60	70	41	14	21	M26×1.5					2870
MFC-1027F	112	100	-	63.5	70	41	14	21	M27×2.0					3070
MFC-1030F	112	100	-	63.5	70	41	14	21	M30×1.5					3070
MFC-1036F	143	130	-	75	95	48	16	25	M36×1.5		5790			

L ※ With T type floating joints.

Fig.1

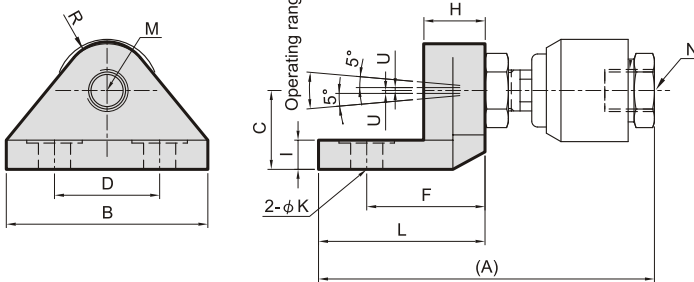
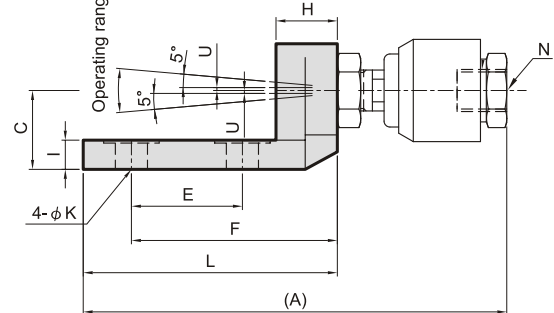


Fig.2



Model	A	B	C	D	E	F	H	I	K	L	R	M	N	Illustration fig no.	Permissible U deviation	Rot. angle	Permissible pressure	Weight (g)
MFC-1008L	71	44	15	26	-	19	11	8	9	32	10	M8×1.25	M8×1.25/1.0	Fig.1	0.5	±5°	3.5MPa (max.) Pneumatic / Hydraulic	150
MFC-1010L	85	44	19	26	-	24	12	5	9	36	11	M10×1.25	M10×1.25		0.75			200
MFC-1012L	82	44	19	26	-	24	12	5	9	36	11	M12×1.25	M12×1.25/1.5		1			205
MFC-1014L	115	69	22	36	-	40.5	21	10	11	57	16	M14×1.5	M14×1.5		1.25			600
MFC-1016L	163	61	28	32	32	76	32	15	11	90	17	M16×1.5	M16×1.5	Fig.2	2			1150
MFC-1018L	163	61	28	32	32	76	32	15	11	90	17	M18×1.5	M18×1.5		2.5			1150
MFC-1020L	190.5	68	35	36	36	89	40	21	14	108	21	M20×1.5	M20×1.5					1900
MFC-1022L	192	68	35	36	36	89	40	21	14	108	21	M22×1.5	M22×1.5					1900
MFC-1024L	214	69	42	36	36	95	45	26	14	113	21	M24×1.5	M24×1.5					2800
MFC-1026L	214	69	42	36	36	95	45	26	14	113	21	M26×1.5	M26×1.5					2800